

SCG



FREE-STANDING CONVECTOR WITH A FAN AND COOLING OPTION



heating



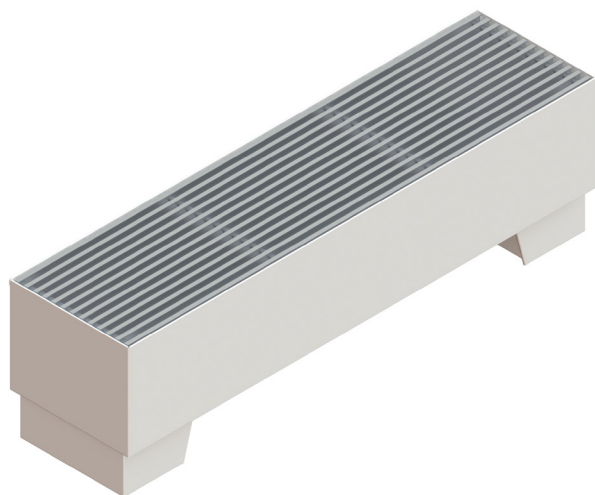
cooling



with a fan



dry environment



DIMENSIONS

width	260 mm
height	230 mm
length	900 až 2000 mm
connection *	G3/4"

* internal thread on heat-exchanger, without water connection accessories

CHARACTERISTICS

- **body made from high quality stainless steel**
- electronically commutated (EC) motor
- high forced convection output
- heating unit with short response time
- heating also when the fan is off
- low electricity consumption
- safe 24 V DC voltage
- contains own microprocessor-controlled unit
- also suitable for heat pump

COLOUR OPTIONS

Standard colour combinations:

Painted body		Anodized grille	
Code	Colour	Code	Colour
2A	silver	2A	silver
2B	light bronze	2B	light bronze
2C	dark bronze	2C	dark bronze
4A	black	4A	black
4B	white	2A	silver
4X	RAL*	4X	RAL*

* at an extra charge, after consultation

INPUT POWER

length [mm]	power [W]	EC MOTOR
900	27	
1000	27	
1250	34	
1500	36	
1750	41	
2000	50	

The standard delivery includes convector, anchoring accessories and covering grille. All other accessories (connection accessories, control elements, etc.) must be ordered and specified separately.

The decorative convector grille must not be exposed to weight load or covered.

The technical parameters are set according to the relevant standards. In fact, they may vary depending on the location of the convector, the cover grille, the connection type. As a part of the product development, MINIB, a.s. reserves the right of construction and price adjustments.

HEATING POWER

heating power Q [W]					
length L [mm]	input/output water temperature [°C]	fan speed			
		off	low	medium	high
		air temperature tA = 20°C			
900	85/75	217	2236	2657	2918
	75/65	179	1841	2188	2403
	65/55	141	1451	1725	1895
	45/40	76	786	935	1026
1000	85/75	251	2580	3066	3367
	75/65	207	2124	2525	2773
	65/55	163	1675	1990	2186
1250	45/40	88	907	1078	1184
	85/75	334	3440	4088	4490
	75/65	275	2832	3366	3697
	65/55	217	2233	2654	2915
1500	45/40	118	1210	1438	1579
	85/75	418	4299	5110	5612
	75/65	344	3540	4208	4621
1750	65/55	271	2791	3317	3643
	45/40	147	1512	1797	1974
	85/75	502	5159	6132	6734
2000	75/65	413	4248	5049	5545
	65/55	326	3350	3981	4372
	45/40	176	1815	2157	2368
	85/75	585	6019	7154	7857
2000	75/65	482	4957	5891	6470
	65/55	380	3908	4644	5101
	45/40	206	2117	2516	2763

COOLING POWER

cooling power Q [W]					
length L [mm]	input/output water temperature [°C]	relative humidity	fan speed		
			low	medium	high
			air temperature TA=27°C		
900	7/12	sensitive	407	488	611
	7/12	50%	547	657	821
	16/18	sensitive	245	294	367
	16/18	50%	245	294	367
1000	7/12	sensitive	469	564	705
	7/12	50%	631	758	948
	16/18	sensitive	282	339	423
1250	16/18	50%	282	339	423
	7/12	sensitive	626	751	940
	7/12	50%	842	1010	1264
	16/18	sensitive	357	452	565
1500	16/18	50%	357	452	565
	7/12	sensitive	782	939	1174
	7/12	50%	1052	1263	1579
1750	16/18	sensitive	470	564	706
	16/18	50%	470	564	706
	7/12	sensitive	939	1127	1409
	7/12	50%	1263	1516	1895
2000	16/18	sensitive	564	677	847
	16/18	50%	564	677	847
	7/12	sensitive	1095	1315	1644
	7/12	50%	1473	1768	2211
2000	16/18	sensitive	658	790	988
	16/18	50%	658	790	988

REGULATION OPTIONS

Type of regulation	Function of the convector	Control	Switched sources
EB-A ¹⁾ manual	heating	thermostat UT15 customer thermostat for 12V or 230V + ADA converter	for DIN rail: PSD 55W PSD 90W
	heating cooling	BMS superior system thermostat UT15	
EB-B automatic	heating	thermostat UT15 thermostat CH110 thermostat TH343 customer thermostat for 12V or 230V + ADA converter	
	heating cooling	thermostat UT15	
EB-C semi-automatic	heating cooling	thermostat UT15	
	heating	customer thermostat for 12V or 230V + ADA converter	

IT IS POSSIBLE TO USE YOUR OWN REGULATION.

1) it is necessary to reset the control unit-EB-block (by default it is set to EB-B / EB-C)

ACOUSTIC PRESSURE

length L [mm]	Speed		
	speed 1	speed 2	speed 3
	Equivalent acoustic pressure level LAeq,2m [dB]		
900	30,8	32,6	38,8
1000	31,4	33,2	39,4
1250	32,8	34,7	40,9
1500	33,0	34,8	41,0
1750	34,1	35,9	42,0
2000	34,3	36,1	42,2

CONNECTION OPTIONS AND ACCESSORIES

- connection **WITHOUT A HEAD**
- connection **WITH AN ELECTROTHERMAL HEAD**
- connection **WITH A CUSTOMER HEAD** (after consultation)

The type of connection accessories varies according to the type and purpose of the convector. Connection accessories are packed separately and are not included in the standard convector delivery. Information on request from your sales representative or on our website.

INDIVIDUAL CALCULATION of technical data you can find on our website.

